

## QUAD PULSE PACKAGE

### Features:

- Antistatic Bag-In Bag-Out safe-change system
- Pressure shock-resistant housing
- ATEX type certified in the highest safety category
- Advanced online-cleaning function
- Various dust discharge options
- Compact design, small footprint
- Indoor installation close to the process
- Ideal for high-vacuum applications
- Available with 1 or 2 filter cartridges

Compact and easy-to-install dust collector providing full containment when handling hazardous dusts. Designed for flexibility, the unit can be placed anywhere within a facility without the constraints of traditional explosion protection systems.

### Applications

Suitable for pharmaceutical or chemical applications such as: Tableting, filling, coating, granulating, drying, mixing, blending, packaging, central vacuum.

### Containment

The QPP PX is utilising Camfil's market-leading Camtain technology with antistatic Bag-In Bag-Out safe-change system in order to protect operators and the environment from exposure to hazardous substances.

### Explosion protection

The QPP PX is designed with pressure shock-resistant housing which maintains its integrity with no damage during an explosion event. No need for additional expensive explosion protection devices, the unit is ATEX certified for ST1 metal and ST2 organic dusts. The Absolute H14 HEPA filter acts as a validated flame barrier.

### Cleaning system

Quad Pulse Package dust collectors provide a cleanable filter system that allows continuous manufacturing processes and prevents from regular, expensive filter replacements. The filter cartridges are divided into four segments which are continuously cleaned, one at a time, by the unique Quad Pulse system, ensuring constant air flows during operation.

### Installation

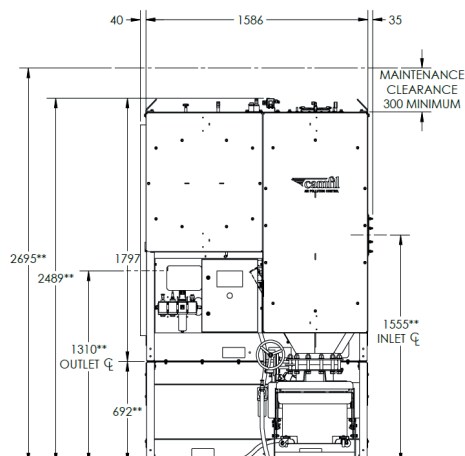
The compact design and small footprint allows installation close to the process what in turn reduces the amount of ductwork and mitigates exposure risks for operators. Various inlet and outlet options are available.

### Air volume

The QPP PX is available with 1 or 2 filter cartridges and handles air volumes up to 1,500 / 3,000 m<sup>3</sup>/h.

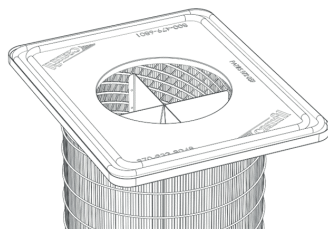
### Technical data

Front view

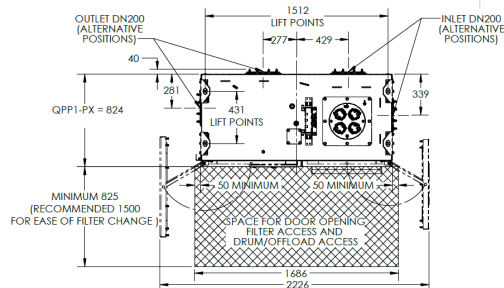


\*\* DIMENSIONS AS MARKED ARE DEPENDENT ON OFFLOAD TYPE.  
GIVEN HEIGHTS APPROPRIATE FOR 35L BIBO/HV DRUM OPTION  
- ADD 152 FOR 60L BIBO/HV DRUM OPTION  
- ADD 708 (TYPICAL) FOR CDV OFFLOAD OPTION

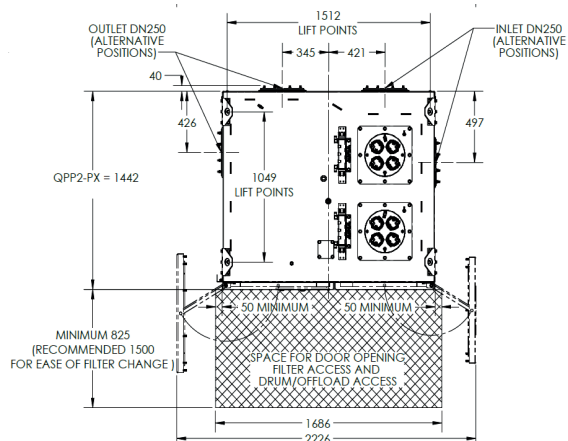
Filter cartridge with 4 segments



Top view: QPP1 PX with 1 filter cartridge



Top view: QPP2 PX with 2 filter cartridges



	QPP1 – 1 filter cartridge	QPP2 – 2 filter cartridges
<b>Air capacity</b> (depending on application and filter type)	800 – 1,500 m <sup>3</sup> /h	1,500 – 3,000 m <sup>3</sup> /h
<b>Operating pressure range</b>	–25 to 0 kPa	
<b>Main filter – Dura-Pleat (polyester) Not for IILC</b>	15 m <sup>2</sup>	2 x 15 m <sup>2</sup>
<b>Main filter – HemiPleat (cellulose/polyester)</b>	20.5 m <sup>2</sup>	2 x 20.5 m <sup>2</sup>
<b>Main filter class depending on media</b>	E11/M	
<b>Final filter class: EN 1822</b>	H14, 99.995 % at MPPS	
<b>System dimensions*</b>	1,660 x 867 x 2,641 mm (W x D x H) With Dual Valve: 1,660 x 867 x 3,187 mm (W x D x H)	1,660 x 1,485 x 2,641 mm (W x D x H) With Dual Valve: 1,660 x 1,485 x 3,187 mm (W x D x H)
<b>Weight including filters*</b>	1,200 kg (1,320 kg with CDV)	1,580 kg (1,730 kg with CDV)
<b>Noise level: ISO 3746/EN ISO 11203</b>	LwA = 86.2 dB / LpA EQ 75s = 69.9 dB	
<b>Unit marking: EN 60079–36</b> (* dependent on application) EN 14460	EX II 1/3(2)* D IIB(IIC)* Ex h IIB T135(160)* °C Da/Dc(Db)* EX II 3G/–(3G, 3/2G)* IIA T4 Gc/–(Gc, Gc/Gb)* EX PSR Pex,max = 1.25 Bar	
<b>Max dust KST (Organic/Metal)</b>	300/200 Bar m/s	

\* nominal dimension with 60L offload – Camfil Dual Valve offload option in brackets – other options may vary